

WHAT IS ARYA HOUSE?

ARYA House is a safe environment that provides overnight accommodation for up to six young people between the ages of 14 and 17 years, two nutritious meals per day, snacks and laundry services. At least two full-time, skilled staff per shift operate the service between the hours of 5pm and 10am daily.

CONTACT DETAILS

ARYA HOUSE

P: (08) 9277 8749

E: Arya.House@lwb.org.au

REFERRALS:

Child and Carer Connection Hub

P: (08) 9222 2555

E: Referral.Officer@communities.wa.gov.au

Crisis Care

P: (08) 9223 1111, or

P: 1800 199 008 (Country Free Call)

 @lwbaustralia

 /company/life-without-barriers/

 LWBAustralia

 lwbaustralia

 lwbaustralia

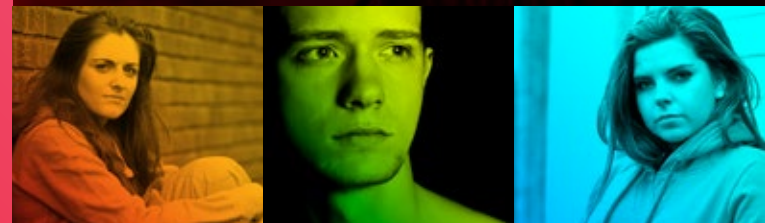
www.lwb.org.au



WE'RE FOR THOSE IN NEED

At Risk Youth Accommodation
(ARYA House)

xx/xx/2019 | LWB13687



WE
LIFE WITHOUT BARRIERS
VE

We all share the responsibility for child safety

WE
LIFE WITHOUT BARRIERS
VE

We all share the responsibility for child safety



The aim of the ARYA service is to provide safe accommodation on a temporary basis where there are no other appropriate accommodation options, and/or where young people are struggling to engage with other existing services.

Life Without Barriers is contracted by the Department of Communities, Child Protection and Family Support Division to provide the At Risk Youth Accommodation service in WA's metro area for young people aged 14 to 17 years in the CEO's care and 15 to 17 year olds who are not in the CEO's care who require this service.

WE'RE FOR A WAY FORWARD

ARYA SERVICES

The ARYA program provides:

- Emergency overnight accommodation when no alternative suitable accommodation is available
- A nutritious breakfast and evening meal
- The opportunity and means to maintain high standards of personal hygiene and care
- Passes to use public transport as required.

As part of these services at ARYA House, the young person is offered:

- Hygiene amenities, such as a towel, access to a shower, a toothbrush and toothpaste
- A laundry service to ensure they have access to clean clothing the following day
- A hot meal and access to snacks
- Breakfast or the option of a packed breakfast
- The opportunity to contact their case manager, and
- Access to resources and service information to contact other service providers if required.

Young residents are woken at 8am and asked to prepare themselves for the day. On leaving the house a 24 hour bus pass is provided.

ACCESS AND OPENING HOURS

ARYA House is open for admissions after 5pm daily and the young people accommodated overnight are required to leave by 10am the next morning.

To gain access to this service a referral from the CPFS' Child and Carer Connection Hub is required. The referral must be received by ARYA House staff during office hours to allow time for the Placement Referral Form details to be reviewed in advance. After hours referrals are received through Crisis Care.

On admission, ARYA House staff conduct a house induction with the young person and complete the Admission Form. The induction includes the provision of information about ARYA House's rules and expectations, which are in place to ensure the provision of a safe environment.

During the morning, case managers can contact and arrange to meet with their young person at ARYA before they leave, to help ensure continuity and effective support.