

# DOMESTIC AND FAMILY VIOLENCE



## WHO

**2.9%**

In Australia 2.9% of **women** experience violence by a current partner



**1.7%**

In Australia 1.7% of **men** experience violence by a current partner



**2.7%**



**18-24**

**4.4%**



**25-34**

**2.6%**



**45-54**

**1.2%**



**55+**

## IN THE LAST 2 YEARS

Women aged 25 to 34 years were more likely to experience partner violence in the last two years

## QLD

**6.2%**

**3.2%**



**6.2% of women** experienced violence and emotional abused by a current partner

**3.2% of men** experienced violence and emotional abused by a current partner

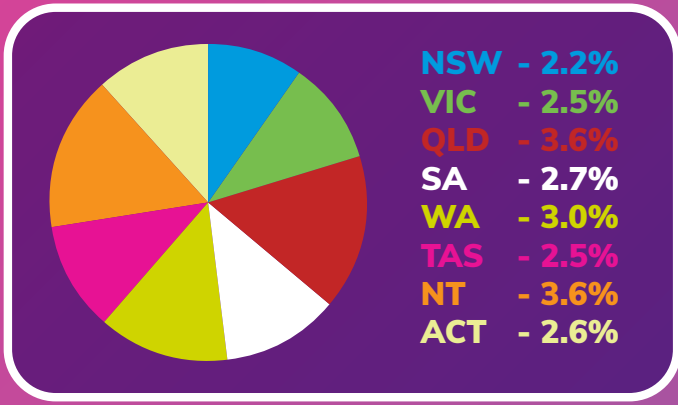


## ELDER ABUSE

More than 10,900 calls were made to elder abuse hotlines across Australia in 2017-18.

The calls were more commonly related to financial or emotional abuse.

**LIFE WITHOUT BARRIERS**



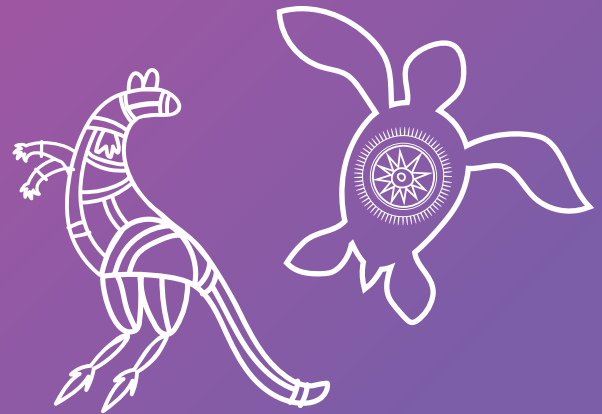
## PEOPLE WITH DISABILITY



People with disability were 1.8 times as likely to experience partner violence as those without disability in the previous 12 months.

## SINGLE PARENT AT RISK

Women living in single parent households were the most likely to have experienced partner violence in the last two years.



## LGBTQI+ PEOPLE

People with diverse sexual orientations and gender diversities are more likely to experience workplace sexual harassment - 52%, compared to 30% of other Australians.



## ABORIGINAL AND TORRES STRAIT ISLANDERS

Indigenous people were 32 times more likely to be hospitalised for family violence as non-Indigenous people.

## RURAL AND REMOTE AUSTRALIA

23% of women living outside major cities experienced violence from a partner, compared to 15% of women in major cities.



<http://www.aihw.gov.au/news-media/media-releases/2019/june>

ABS: 4906.0 - Personal Safety, Australia, 2016

ABS: 4524.0 - In Focus: Crime and Justice Statistics, Partner Violence - January 2020

**LIFE WITHOUT BARRIERS**