



LWB EDUCATION CHARTER

LWB Education is for young people of high school age looking for a different way of doing school.

LWB Education Philosophy

Education is a human right and provides pathways to positive and equitable futures.

LWB Education aligns with The Alice Springs (Mparntwe) Education Declaration on Educational Goals for Young Australians (2019) as follows:

Goal 1: The Australian education system promotes excellence and equity

Goal 2: All young Australians become:

- confident and creative individuals
- successful lifelong learners
- active and informed members of the community

LWB's Education ensures that young people have equal access to educational opportunities by removing systemic barriers to education and providing the necessary resources and support for holistic learning success. Young people are at the centre of their learning journey, seeing themselves as learners and developing agencies, skills and talents for future pathways. Relationships held in an atmosphere of trust are key in LWB Education.

Vision

Thriving, flexible, culturally responsive, inclusive, and fun schools that are hubs of community connection and learning.

Purpose

Hearing the voices of young people in all we do creates purpose for the school community. The school community responds by providing a quality, flexible, young person-centred education that celebrates every individual, fostering a sense of belonging, and providing the necessary resources for future pathways and success.

Values

LWB Education values are the foundation of everything we do and help shape a school culture and environment where everyone feels safe and valued.

Relationships: Relationships are at the heart of the teaching and learning experience and we respect, support and build strong, positive connections between young people, staff, and the community.

Respect: We value diversity and individuality, creating a culture of respect where everyone is treated with kindness and unconditional positive regard. It is a privilege to journey with young people who choose the LWB Education community.

Responsive: We partner with families and community to find solutions. We are adaptable and attentive to the needs of young people and ensure young people's voice in their decisions.

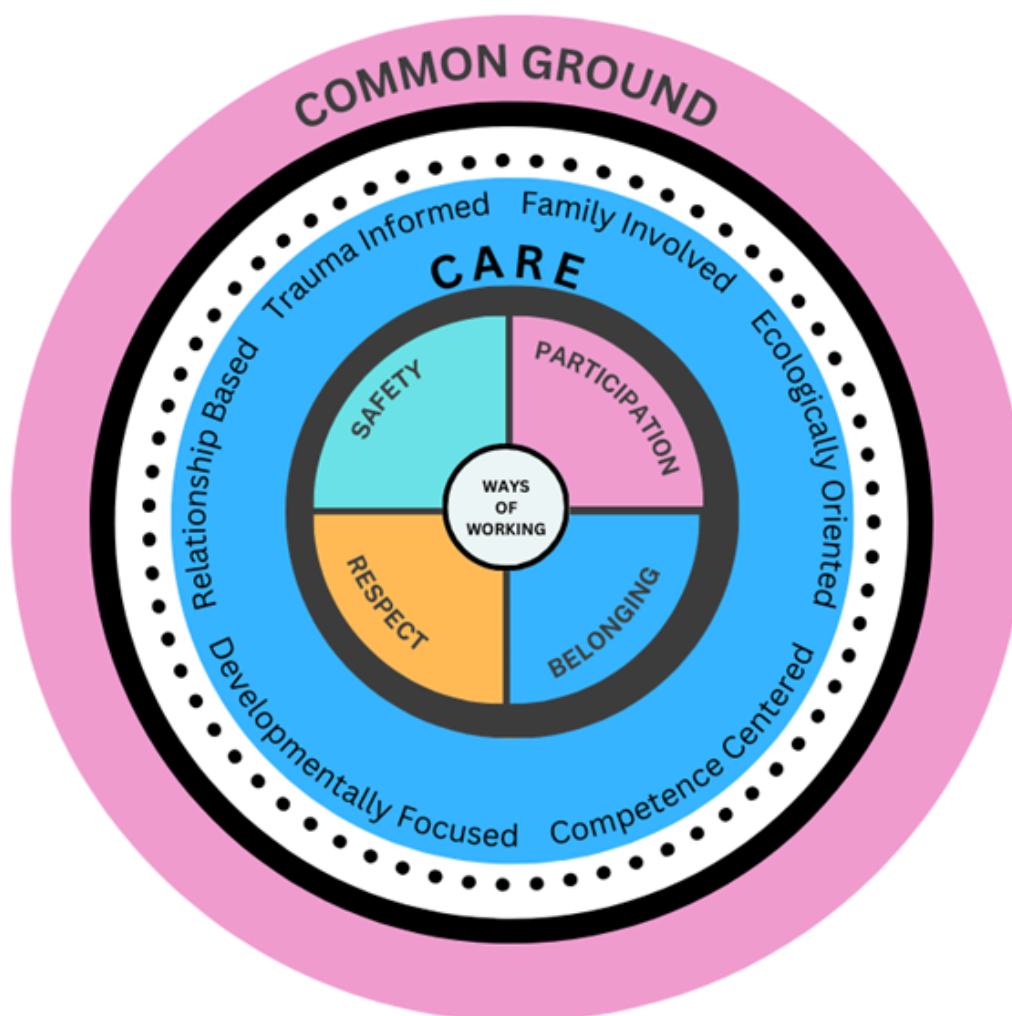
Imagination: We embrace imagination in education, valuing student creativity and exploration as pathways to personal, more meaningful learning.

Courage: We have the courage to take risks and step out of our comfort zones walking alongside young people, to face challenges with confidence and resilience. We are a school community with a high expectations culture where young people are change leaders.

Practice Model

LWB Education embeds the values in daily practice through a whole school approach known as Common Ground. Common Ground describes the ways we are together in our school communities and is lived through two key practice models.

Common Ground Practice Model



Infographic key:

The Common Ground Practice model represents a holistic, interconnected approach to practice, with no hierarchy. At the core, the Ways of Working model supports transformational relationships. Surrounding this, the CARE model establishes trauma-informed conditions for change, enhancing Safety, Participation, Respect, and Belonging. The dotted layer represents the individual members of the school community, highlighting connection and collaboration. Encircling everything, Common Ground reflects the shared values and collective purpose that unify and guide the community.

CARE on Common Ground

CARE on Common Ground is a therapeutic staff and organisational model of practice to create conditions for change. The six core principles of CARE are embedded in staff practice: being developmentally focused, trauma informed, family involved, relationship based, competence centered and ecologically oriented. School staff are trained and competent in the CARE model bringing the six principles into all aspects of the school's operation.

Ways of Working (WoW) on Common Ground

WoW on Common Ground is a therapeutic, relational model of practice to bring people together in transformational ways. The four ways of working; Respect, Safety, Participation and Belonging, guide relationships, interactions, and decisions within the school community.

Respect: is respect for self, others and the environment.

Safety: is how we create physical and emotional safety.

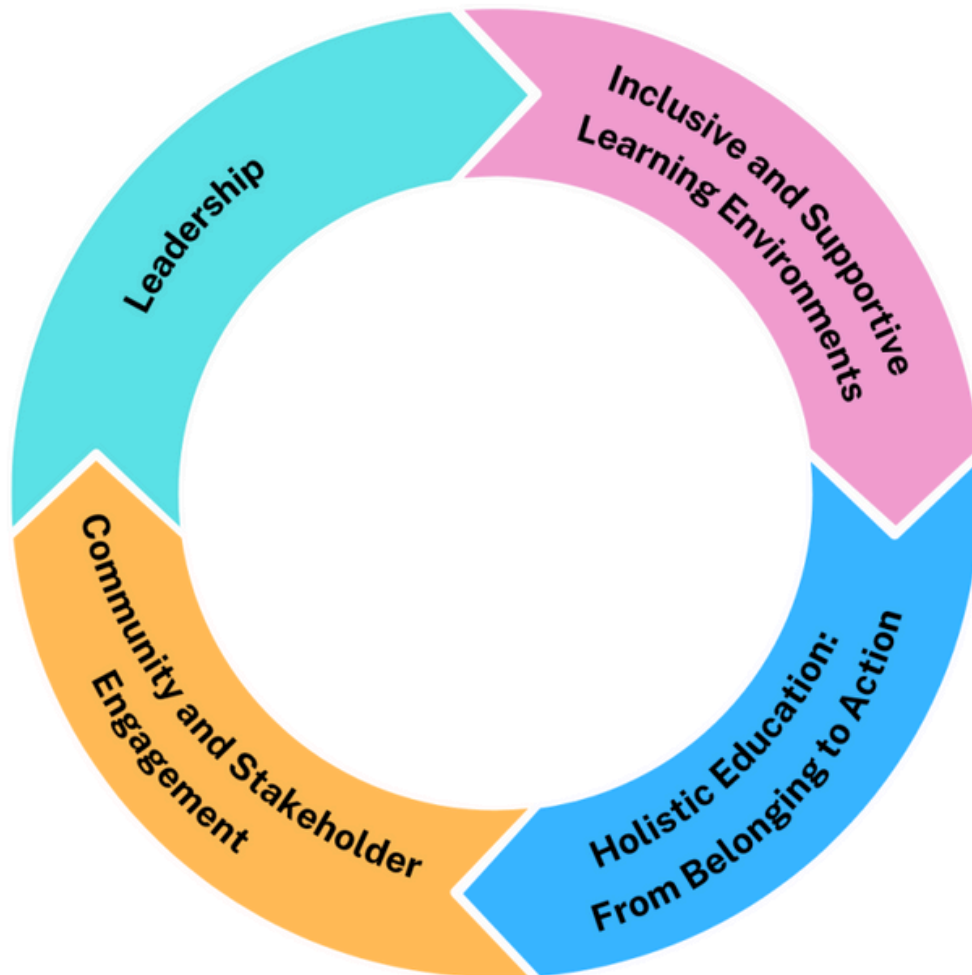
Participation: is about having a go and the right to negotiate how we participate.

Belonging: is about fostering a place for everyone.

Teaching & Learning

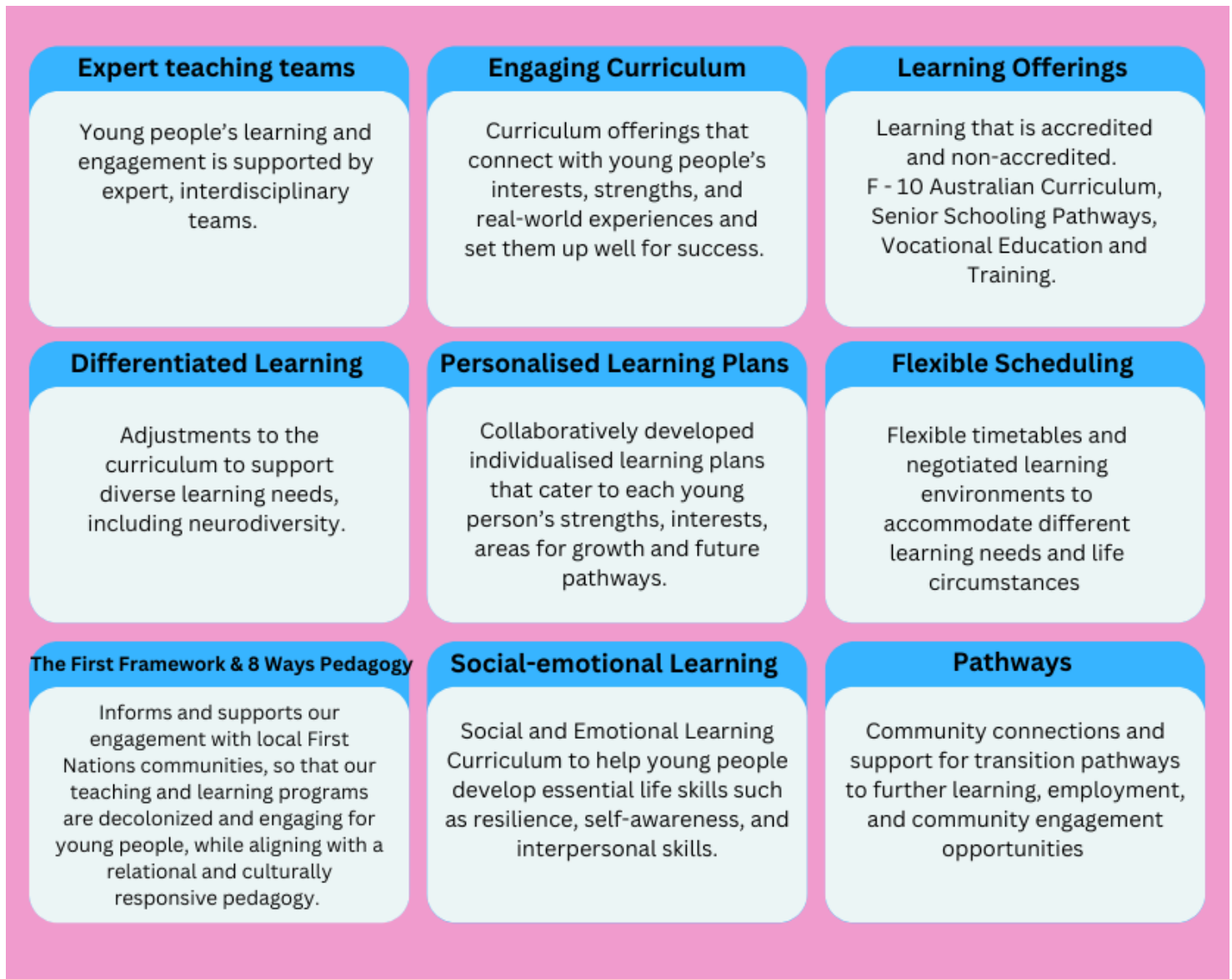
LWB Education's Teaching and Learning is outlined within four interrelated domains.

Teaching and Learning Domains



Inclusive and Supportive Learning Environments

Quality teaching and learning practices that create inclusive and supportive learning environments include:



Holistic Education: From Belonging to Action

As young people develop a sense of belonging within the learning community, they pay attention to and act on their learning.

We create a school culture where unconditional positive regard means every young person feels valued, connected, and empowered. Through a holistic and inclusive approach, we foster high expectations, and ensure equitable opportunities for cultural safety, expression and dignity, personal growth (including mental and physical wellness), lifelong learning, and meaningful participation in society.

Community and Stakeholder Engagement

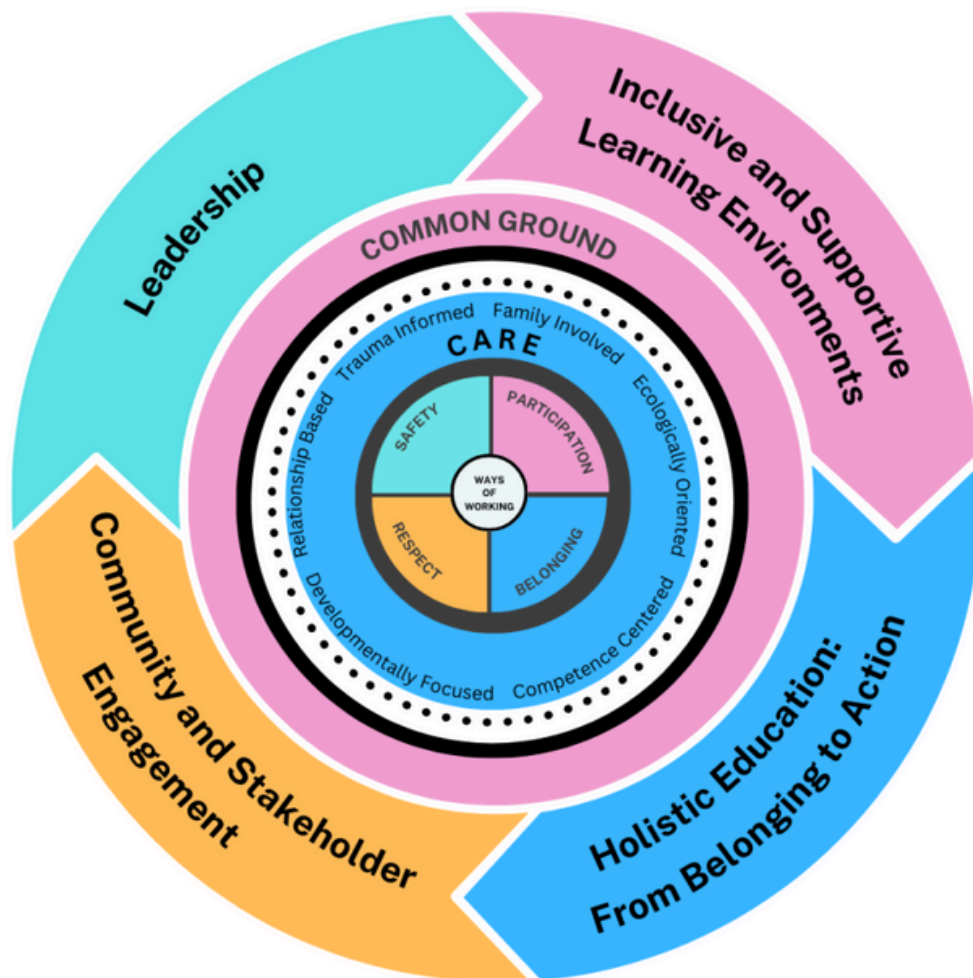
Education is a collaborative effort that brings together young people, families, educators and the community. Well established community and stakeholder engagement ensures shared responsibility and responsiveness to the education and future pathways for young people. Community collaboration provides a platform to collectively address challenges, ensure alignment to community need, celebrate achievements and improve the learning and wellbeing of young people.

Leadership

School leaders ensure the integrity and inter connectedness of each teaching and learning pillar. Effective leaders support an inclusive culture, promote continuous professional learning and collaboration among staff and lead ongoing school wide improvement practice.



Whole School Education Model



Infographic Key

This integrated model emphasises the interconnectedness of effective teaching and learning and the relational and trauma informed approaches of CARE and WoW to create a common ground where the school community learns together in a supportive, responsive and thriving educational environment.

Child Protection

We are committed to the protection and safety of the young people we support, including from intentional and unintentional harm caused by individuals and/or from our processes and systems. We ensure all staff, volunteers, and people in contact with young people have mandated working with children clearances. We are committed to acting in the best interests of young people. We listen to and act on young people's own views about what helps to create a safe school environment.



At LWB schools, voice matters.

Together, we'll create a learning experience that helps young people grow, succeed, and build the future they and their communities want.

Welcome to a place where you can truly thrive.